



ACCOMMODATION GUIDE

2017-2018

NEOMA

BUSINESS SCHOOL


Rouen Campus

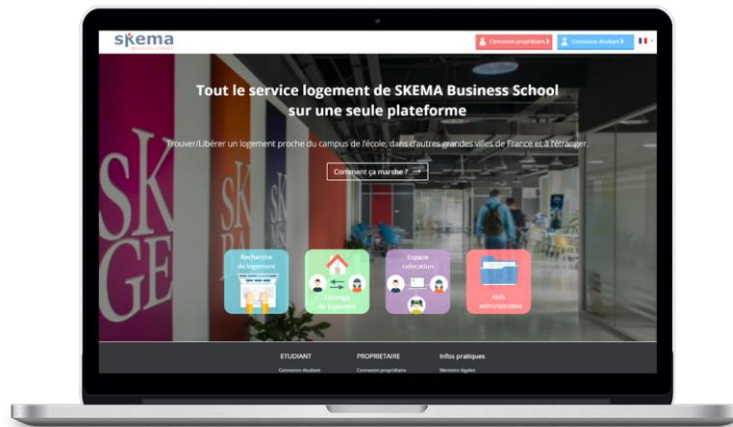


CONTENTS

- 1 - The NEOMA Business School accommodation service..... **p.3**

 - 2 - The various accommodation options
 - Student halls..... **p.4 - 15**
 - Private landlords..... **p.15**
 - Offers from estate agencies..... **p.16**
 - The Crous accommodation service..... **p.17**

 - Contact **p.18**
- 



The NEOMA Business School accommodation service

Through its accommodation service, your school has created a platform, published by Studapart, allowing you to find your accommodation more easily. Numerous offers: private landlords, student halls of residence and estate agencies offer a variety of accommodation options near the campus. These offers are grouped together on the school's accommodation platform and updated on a daily basis:

<http://housing-platform.neoma-bs.fr/en>

Students can make reservation requests directly on the platform with their online rental file.

All NEOMA Business School students can access offers by logging in with their school log-in details.

These log-in details are communicated to each student when they join one of the NEOMA Business School programmes.

Offers can be freely posted on the online platform and are not binding on our establishment. You must ensure that you always sign a tenancy agreement in due form.

STUDENT HALLS

Arborea – REF #1565

Type of accommodation:

Type	Surface area	Furnished	Rent/month	Administrative fees
Studio	22m ²	Yes	€495	€300
One bedroom apartment	39m ²	Yes	€680	€300

**The prices indicated are for information purposes only and are not binding*

During the year, NEOMA Business School students benefit from special offers in several student halls.

Your residence "Arborea" will offer you many services included in the rent : Breakfast during the week, cleaning in the room, gym, internet access, access to laundry facilities, presence of manager, bike storage.

Students will have a beautiful view from the residence and direct access to the wood for walks or running

ACCES : 300m from NEOMA BS – 4,8km from the city center

HOW TO MAKE A RESERVATION ?

Negotiated and priority access conditions by using the NEOMA Business School accommodation platform

<http://housing-platform.neoma-bs.fr/en/school/advert/residence/1565>

A problem? Call us on **+33 (0)1 80 92 64 01**



STUDENT HALLS



STUDEA ROUEN PREFECTURE – REF #584

Type of accommodation:

Type	Surface area	Furnished	Rent/month	Administrative fees
Studio	17 to 26m ²	Yes	€460 to €525	€0
One bedroom apartment	33 to 34m ²	Yes	€545 to €565	€0

**The prices indicated are for information purposes only and are not binding*

During the year, NEOMA Business School students benefit from special offers in several student halls.

Located in the prefecture district. Near the banks of the Seine, close to public transport, the new residence Studéa Prefecture Rouen seduce you with the quality of its functional and aesthetic apartments as well as its location. It is located near public transportation (Tramway T1, T2, and T3); Near the Place de la Madeleine and 10 minutes from the city Mont Saint Aignan. Choosing this residence, you will have free and unlimited Internet ACCESSs via optical fiber in each apartment.



ACCES : 2,2km from NEOMA BS – 2km from the city center



HOW TO MAKE A RESERVATION ?

Negotiated and priority access conditions by using the NEOMA Business School accommodation platform

<http://housing-platform.neoma-bs.fr/en/school/advert/residence/584>

A problem? Call us on **+33 (0)1 80 92 64 01**

STUDENT HALLS

O.H.L.E. Stanford – REF #1078

Type of accommodation:

Type	Surface area	Furnished	Rent/month	Administrative fees
Studio	19 to 24m ²	Yes	€440 to €468	€250
Studio Mezzanine	27 to 33m ²	Yes	€500	€250
One bedroom apartment	35 to 47m ²	Yes	€555 to €656	€250

**The prices indicated are for information purposes only and are not binding*

During the year, NEOMA Business School students benefit from special offers in several student halls.

The residence Le Stanford is located in the prefecture district and offers 45 single furnished studios, 19 furnished mezzanine studios and 9 furnished T2.

The accommodations are equipped with a bathroom (washbasin, shower, WC), a main room with a trundle bed, desk, table, chairs and cupboards. The kitchen area is equipped with a sink, electric hob, fridge.



ACCES : 3,3km from NEOMA BS – 26 minutes by public transportation
– 1,7km from the city center

HOW TO MAKE A RESERVATION ?

Negotiated and priority access conditions by using the NEOMA Business School accommodation platform

<http://housing-platform.neoma-bs.fr/en/school/advert/residence/1078>

A problem? Call us on **+33 (0)1 80 92 64 01**

STUDENT HALLS



O.H.L.E. Louis Pasteur – REF #1079

Type of accommodation:

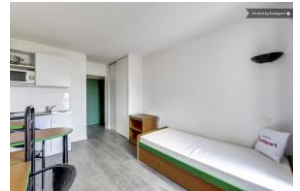
Type	Surface area	Furnished	Rent/month	Administrative fees
Studio	17 to 19m ²	Yes	€391 to €445	€250

**The prices indicated are for information purposes only and are not binding*

During the year, NEOMA Business School students benefit from special offers in several student halls.

The LYess Pasteur residence is located in the district of the prefecture and offers 95 simple furnished studios.

The accommodations are equipped with a bathroom (Washbasin, shower, WC), a main room furnished with bed, desk, table, cupboard, and chairs. The kitchen area is equipped with a sink, electric hob, refrigerator, microwave



ACCES : 3km from NEOMA BS – 21 minutes by public transportation
– 1,9km from the city center



HOW TO MAKE A RESERVATION ?

Negotiated and priority access conditions by using the NEOMA Business School accommodation platform

<http://housing-platform.neoma-bs.fr/en/school/advert/residence/1079>

A problem? Call us on **+33 (0)1 80 92 64 01**

STUDENT HALLS



STUDEA ROUEN CONSTANTINE– REF #1487

Type of accommodation:

Type	Surface area	Furnished	Rent/month	Administrative fees
Studio	16 to 23m ²	Yes	€460 to €549	€0
One bedroom apartment	30m ²	Yes	€595	€0
Studio bis	26m ²	Yes	€519 to €550	€0

**The prices indicated are for information purposes only and are not binding*

During the year, NEOMA Business School students benefit from special offers in several student halls.

Only a few steps away from Rouen city center, discover a brand new residence with a quite modern architecture and close to every student life commodities. With no less than 136 studios, the residence offers a real comfort. Every apartment is fully furnished and well-designed with a kitchen and every space you need in order to make your studies a real success

ACCES : 2,2km from NEOMA BS – 36 minutes by public transportation
– 3,4km from the city center

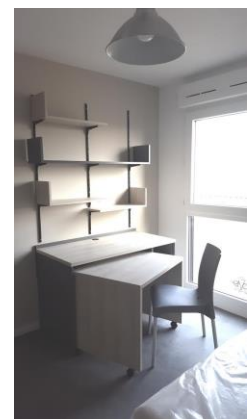


HOW TO MAKE A RESERVATION ?

Negotiated and priority access conditions by using the NEOMA Business School accommodation platform

<http://housing-platform.neoma-bs.fr/en/school/advert/residence/1487>

A problem? Call us on **+33 (0)1 80 92 64 01**



STUDENT HALLS



Résidence Suitétudes Oméga – REF #625

Type of accommodation:

Type	Surface area	Furnished	Rent/month	Administrative fees
Studio	19 to 23m ²	Yes	€440 to €468	€250
Studio Mez	27 to 30m ²	Yes	€500	€250
One bedroom apartment	35 to 47m ²	Yes	€555 to €656	€250

**The prices indicated are for information purposes only and are not binding*

During the year, NEOMA Business School students benefit from special offers in several student halls.

Close to the city center and few minutes from public transport, the residence Omega has all the infrastructure and all the necessary facilities. It offers furnished apartments, equipped, bright and functional. The building features contemporary architecture.

ACCES : 3,3km from NEOMA BS – 26 minutes by public transportation
– 1,6km from the city center

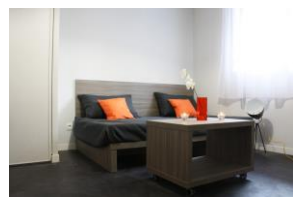


HOW TO MAKE A RESERVATION ?

Negotiated and priority access conditions by using the NEOMA Business School accommodation platform

<http://housing-platform.neoma-bs.fr/en/school/advert/residence/625>

A problem? Call us on **+33 (0)1 80 92 64 01**



STUDENT HALLS

O.H.L.E. Corneille– REF #1077

Type of accommodation:

Type	Surface area	Furnished	Rent/month	Administrative fees
Studio	14 to 20m ²	Yes	€427 to €455	€250

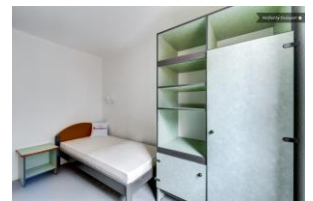
**The prices indicated are for information purposes only and are not binding*

During the year, NEOMA Business School students benefit from special offers in several student halls.

The Residence Corneille is located in a quiet area, right in the historic town center, behind the Hôtel de Ville and next to the Lycée Corneille.

The residence has 88 single studios.

The accommodations are equipped with a bathroom (Washbasin, shower, WC), a main room furnished with bed, bedside table, chairs, wardrobe and shelf. The kitchenette is equipped with a sink, electric hobs, and fridge.



ACCES : 3,9km from NEOMA BS – 24 minutes by public transportation
– 350m from the city center

HOW TO MAKE A RESERVATION ?

Negotiated and priority access conditions by using the NEOMA Business School accommodation platform

<http://housing-platform.neoma-bs.fr/en/school/advert/residence/1077>

A problem? Call us on **+33 (0)1 80 92 64 01**

STUDENT HALLS



STUDEA ROUEN ST SEVER – REF #585

Type of accommodation:

Type	Surface area	Furnished	Rent/month	Administrative fees
Studio	15 to 20m ²	Yes	€465 to €470	€0

**The prices indicated are for information purposes only and are not binding*

During the year, NEOMA Business School students benefit from special offers in several student halls.

Rouen Saint Sever residence invites you to stay in the heart of the left bank of the city in studios of 16m² to 21m². You will benefit from an ideal location, in fact, the residence is close to the shopping center and public transport (bus, metro station "Saint- Sever ", T1, T2, T3).

Choosing this residence, you will have free and unlimited Internet ACCESSs via optical fiber in each apartment.



ACCES : 5,1km from NEOMA BS – 29 minutes by public transportation
– 2,5km from the city center



HOW TO MAKE A RESERVATION ?

Negotiated and priority access conditions by using the NEOMA Business School accommodation platform

<http://housing-platform.neoma-bs.fr/en/school/advert/residence/585>

A problem? Call us on **+33 (0)1 80 92 64 01**

STUDENT HALLS



RESIDENCE SAINT MARC – REF #836

Type of accommodation:

Type	Surface area	Furnished	Rent/month	Administrative fees
Studio	17 to 20m ²	Yes	€410 to €430	€300

**The prices indicated are for information purposes only and are not binding*

During the year, NEOMA Business School students benefit from special offers in several student halls.

For rent furnished studios of 18m², near downtown, place saint marc, shops and bus. Studios with equipped kitchenette (two hobs, fridge and storage), bathroom with toilet and main room with large closet. Rent from 410,00 € to 430,00 € (Internet, home insurance, cold water INCLUDED)

ACCES : 4,8km from NEOMA BS – 30 minutes by public transportation
– 1km from the city center



HOW TO MAKE A RESERVATION ?

Negotiated and priority access conditions by using the NEOMA Business School accommodation platform

<http://housing-platform.neoma-bs.fr/en/school/advert/residence/836>

A problem? Call us on **+33 (0)1 80 92 64 01**

STUDENT HALLS



O.H.L.E Gambetta– REF #1076

Type of accommodation:

Type	Surface area	Furnished	Rent/month	Administrative fees
Studio	17 to 26m ²	Yes	€388 to €559	€250

**The prices indicated are for information purposes only and are not binding*

During the year, NEOMA Business School students benefit from special offers in several student halls.

Located in the city center of Rouen, the residence is served by 5 bus lines.

The Gambetta Residence has 104 furnished studios.

The accommodations are equipped with a bathroom (Washbasin, shower, WC), a main room furnished with bed, bedside table, chairs, shelf, desk, and wardrobe. The kitchenette is equipped with a sink, electric hobs, and fridge.

ACCES : 4,8km from NEOMA BS – 30 minutes by public transportation
– 1km from the city center



HOW TO MAKE A RESERVATION ?

Negotiated and priority access conditions by using the NEOMA Business School accommodation platform

<http://housing-platform.neoma-bs.fr/en/school/advert/residence/1076>

A problem? Call us on **+33 (0)1 80 92 64 01**

STUDENT HALLS



Les Estudines Rouen-Darnétal– REF #1084

Type of accommodation:

Type	Surface area	Furnished	Rent/month	Administrative fees
One bedroom apartment	19 to 22m ²	Yes	€325 to €474	€207

**The prices indicated are for information purposes only and are not binding*

During the year, NEOMA Business School students benefit from special offers in several student halls.

The student residence Estudines Rouen Darnétal, located in a peaceful setting, ideal for successful studies, offers T1 type apartments (studio), furnished and equipped kitchenette with electric hob, microwave, refrigerator, and a bathroom. Many services are available. Located on the right bank of Rouen, opposite the School of Architecture, the residence is near the center of Darnétal and its shops. The TEOR line 3, at the foot of the residence (Auberge de Jeunesse station), will allow you to ACCESSs the Hospital and the Rouen train station quickly.



ACCES : 6,2km from NEOMA BS – 50 minutes by public transportation
– 2,7km from the city center



HOW TO MAKE A RESERVATION ?

Negotiated and priority access conditions by using the NEOMA Business School accommodation platform

<http://housing-platform.neoma-bs.fr/en/school/advert/residence/1084>

A problem? Call us on **+33 (0)1 80 92 64 01**



LANDLORDS



LANDLORDS

Numerous landlords publish their adverts on the NEOMA Business school accommodation platform. On the platform, you can find rentals, shared rentals and homestays

HOW TO VIEW THE OFFERS

Visit the NEOMA Business School housing platform

<http://housing-platform.neoma-bs.fr/en>

or contact us directly

by calling **+33 (0)01 80 92 64 01**



OUR ESTATE AGENCY PARTNERS



Find the agency's offers on:

<http://housing-platform.neoma-bs.fr/en/profile/agency/117>



Find the agency's offers on:

<http://housing-platform.neoma-bs.fr/en/profile/agency/39>



Find the agency's offers on:

<http://housing-platform.neoma-bs.fr/en/profile/agency/190>



Find the agency's offers on:

<http://housing-platform.neoma-bs.fr/en/profile/agency/50>



Find the agency's offers on:

<http://housing-platform.neoma-bs.fr/en/profile/agency/353>

THE CROUS ACCOMMODATION SERVICE

THE ROUEN CROUS

3 Rue d'Herbouville, 76000 Rouen

Tel. 02 32 08 50 00

Website : <http://www.crous-rouen.fr/>

Grant students have priority when it comes to booking accommodation in student halls. However, depending on availability, all students can benefit from this type of accommodation.



Please note: for accommodation in HLMs (French low-income housing) (e.g. Résidence des Facultés), electricity is provided and consumed on an individual basis. It is necessary to take out a contract with an electricity provider and pay said provider for consumption. Moreover, students housed in HLMs are eligible to pay the *taxe d'habitation* (housing tax).



Housing benefits: You can obtain housing benefits from the CAF (French family allowance office) by applying on their website: www.caf.fr. If you are eligible, the housing benefits will be paid directly to your student hall. You will therefore only pay the difference. Make inquiries as soon as you arrive.



ACCOMMODATION CONTACT

Opening hours: 8.30 a.m. - 7.30 p.m.
6 days a week (Monday to Saturday)

 **Tel: +33 (0)1 80 92 64 01**

 **booking@studapart.com**