



---

# ACCOMMODATION GUIDE

## 2017-2018

---

**NEOMA**


BUSINESS SCHOOL

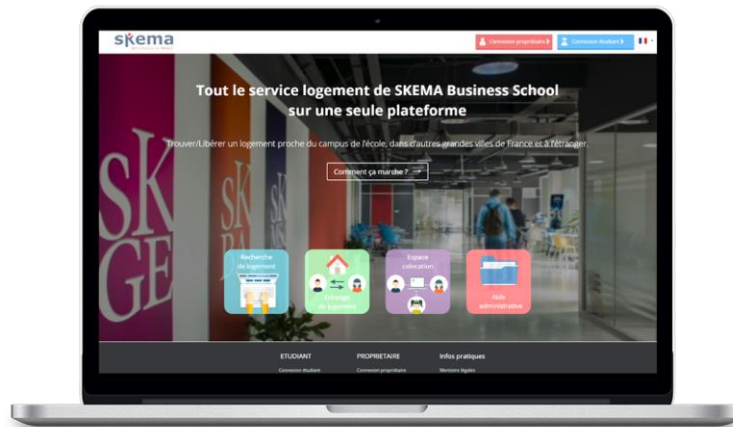
Reims Campus



# CONTENTS

- 1 - The NEOMA Business School accommodation service..... **p.3**
  
- 2 - The various accommodation options
  - Student halls..... **p.4 - 14**
  - Private landlords..... **p.15**
  - Offers from estate agencies..... **p.16**
  - The Crous accommodation service..... **p.17**
  
- Contact ..... **p.18**





## The NEOMA Business School accommodation service

Through its accommodation service, your school has created a platform, published by Studapart, allowing you to find your accommodation more easily. Numerous offers: private landlords, student halls of residence and estate agencies offer a variety of accommodation options near the campus. These offers are grouped together on the school's accommodation platform and updated on a daily basis:

<http://housing-platform.neoma-bs.fr/en>

Students can make reservation requests directly on the platform with their online rental file.

All NEOMA Business School students can access offers by logging in with their school log-in details.

These log-in details are communicated to each student when they join one of the NEOMA Business School programmes.

Offers can be freely posted on the online platform and are not binding on our establishment. You must ensure that you always sign a tenancy agreement in due form.

# STUDENT HALLS



## RESIDENCE LES BULLES – REF #617

Type of accommodation:

Type	Surface area	Furnished	Rent/month	Administrative fees
Studio	25 to 28m <sup>2</sup>	Yes	€462 to €570	€140
One bedroom apartment	37 to 53m <sup>2</sup>	Yes	€630 to €715	€140

*\*The prices indicated are for information purposes only and are not binding*

**During the year, NEOMA Business School students benefit from special offers in several student halls.**

Close to NEOMA Business School, the residence is served by buses and trams. It is close to shopping and 10 minutes from both train stations. The student hall offers 259 accommodations from 25 to 53 m<sup>2</sup>, spread over 4 buildings.

Each building is equipped with elevator and individual intercom with secure access by badge and video surveillance. The services included in the rent are: bike room, laundry, gym, wellness area, coworking room, breakfast (only on weekdays and outside school holidays). Each tenant will also have unlimited internet access via a modem.

**ACCESS** : 120m from NEOMA BS



## HOW TO MAKE A RESERVATION ?

Negotiated and priority access conditions by using the NEOMA Business School accommodation platform

<http://housing-platform.neoma-bs.fr/en/school/advert/residence/617>

A problem? Call us on **+33 (0)1 80 92 64 01**



# STUDENT HALLS



## Residence Jean Prouvé – REF #1082

Type of accommodation:

Type	Surface area	Furnished	Rent/month	Administrative fees
Studio	20m <sup>2</sup>	Yes	€520	€235
One bedroom apartment	34m <sup>2</sup>	Yes	€720	€235

*\*The prices indicated are for information purposes only and are not binding*

**During the year, NEOMA Business School students benefit from special offers in several student halls.**

This aparthotel student residence offers 35 customized services dedicated to your academic success. A residence with a daily manager until 8pm and a night watchman 7/7. Located a few minutes walk from campus 2 of NEOMA BS, this infrastructure offers sports, leisure or work public areas.



**ACCESS** : 1,5km from NEOMA BS – 24 min on public transport



## HOW TO MAKE A RESERVATION ?

Negotiated and priority access conditions by using the NEOMA Business School accommodation platform

<http://housing-platform.neoma-bs.fr/en/school/advert/residence/1082>

A problem? Call us on **+33 (0)1 80 92 64 01**

# STUDENT HALLS



## Residence Arfo Lucien Doyen – REF #1083

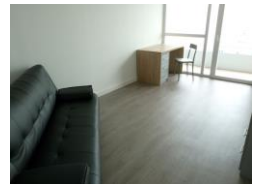
Type of accommodation:

Type	Surface area	Furnished	Rent/month	Administrative fees
Studio	33m <sup>2</sup>	Yes	€490	€0

*\*The prices indicated are for information purposes only and are not binding*

**During the year, NEOMA Business School students benefit from special offers in several student halls.**

The residence is ideally located: close to the city center, on a tramway line (2 stations at less than 100 meters), and in the immediate vicinity of the faculties and NEOMA (about 200 meters). 17 new identical apartments (33 m<sup>2</sup> + balcony) on the 8th and 9th floor + a collective room on the 9th floor



**ACCESS** : 1,4km from NEOMA BS – 18 min on public transport



## HOW TO MAKE A RESERVATION ?

Negotiated and priority access conditions by using the NEOMA Business School accommodation platform

<http://housing-platform.neoma-bs.fr/en/school/advert/residence/1083>

A problem? Call us on **+33 (0)1 80 92 64 01**

# STUDENT HALLS

## Résidium – REF #874

Type of accommodation:

Type	Surface area	Furnished	Rent/month	Administrative fees
Studio	18 to 22m <sup>2</sup>	Yes	€490	€350
One bedroom apartment	28 to 36m <sup>2</sup>	Yes	€625	€350

*\*The prices indicated are for information purposes only and are not binding*

**During the year, NEOMA Business School students benefit from special offers in several student halls.**

New residence of standing, offering 130 studios (2 steps from the center of Reims). The studios (18 to 22 m<sup>2</sup>) and T1 bis (from 28 to 36 m<sup>2</sup>) are fully furnished and equipped. A maximum of services are INCLUDED in the rent: buffet breakfast served on weekdays, apartment cleaning and linen change twice a month, access to laundry facilities, gym, internet access. 15 minutes walk from the town center. Many bus lines are nearby (lines 2, 4, 5, 6 and 9). On site manager.

**ACCESS** : 3,2km from NEOMA BS – 26 min by public transportation

## HOW TO MAKE A RESERVATION ?

Negotiated and priority access conditions by using the NEOMA Business School accommodation platform

<http://housing-platform.neoma-bs.fr/en/school/advert/residence/874>

A problem? Call us on **+33 (0)1 80 92 64 01**



# STUDENT HALLS



## Les Estudines Drouet d'Erlon – REF #1047

Type of accommodation:

Type	Surface area	Furnished	Rent/month	Administrative fees
Studio	17 to 24m <sup>2</sup>	Yes	€460 to €599	€188

*\*The prices indicated are for information purposes only and are not binding*

**During the year, NEOMA Business School students benefit from special offers in several student halls.**

The student residence Estudines Drouet d'Erlon in Reims offers furnished and equipped studios. Many services are available such as reception 24h / 24, internet access, bike storage, laundry facilities, ... Located on the Promenades de Reims, the residence has an ideal location near the city center and near a pedestrian area: shops, restaurants, cinemas, theater ... Transportation is also very easily accessible: Train station, tram, bus.



**ACCESS:** 3km from NEOMA BS – 33 min by public transportation– 900m from Reims city center



## HOW TO MAKE A RESERVATION ?

Negotiated and priority access conditions by using the NEOMA Business School accommodation platform

<http://housing-platform.neoma-bs.fr/en/school/advert/residence/1047>

A problem? Call us on **+33 (0)1 80 92 64 01**



# STUDENT HALLS



## Appart'City Reims Centre – REF #1508

Type of accommodation:

Type	Surface area	Furnished	Rent/month	Administrative fees
Studio	24m <sup>2</sup>	Yes	€480	€150

*\*The prices indicated are for information purposes only and are not binding*

**During the year, NEOMA Business School students benefit from special offers in several student halls.**

It could not be simpler to book an apartment and make the most of the best prices around for furnished accommodation. Take your pick from a studio, a one-bedroom or a two-bedroom apartment, and save money with our special offers. And if you're looking for that extra bit of comfort, feel free to add on optional extras like our laundry or cleaning services.



**ACCESS** : 3,5km from NEOMA BS – 15 minutes bicycle



## HOW TO MAKE A RESERVATION ?

Negotiated and priority access conditions by using the NEOMA Business School accommodation platform

<http://housing-platform.neoma-bs.fr/en/school/advert/residence/1508>

A problem? Call us on **+33 (0)1 80 92 64 01**

# STUDENT HALLS



## Résidence Suitétudes Sigma – REF #620

Type of accommodation:

Type	Surface area	Furnished	Rent/month	Administrative fees
Studio	17 to 21m <sup>2</sup>	Yes	€440 to €490	€350
One bedroom apartment	32 to 36m <sup>2</sup>	Yes	€550 to €590	€350

*\*The prices indicated are for information purposes only and are not binding*

**During the year, NEOMA Business School students benefit from special offers in several student halls.**

Suitétudes Sigma offers equipped apartment designed for a comfortable life in Reims, from 17 to 36m<sup>2</sup>. The rent for a studio is 440€ including expenses. At the foot of the residence, a tram station allows you to travel with public transport and travel quickly and easily on NEOMA BS campus, in town or at the station

**ACCESS** : 4,2km from NEOMA BS – 24 min on public transport – 1,1km from Reims city center

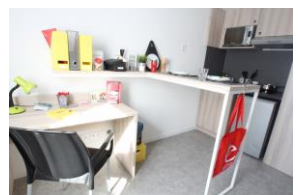


## HOW TO MAKE A RESERVATION ?

Negotiated and priority access conditions by using the NEOMA Business School accommodation platform

<http://housing-platform.neoma-bs.fr/en/school/advert/residence/620>

A problem? Call us on **+33 (0)1 80 92 64 01**



# STUDENT HALLS



## RESIDENCE LE CHAMP DE MARS – REF #319

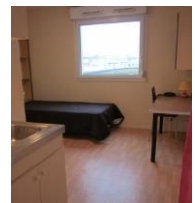
Type of accommodation:

Type	Surface area	Furnished	Rent/month	Administrative fees
Studio	19m <sup>2</sup>	Yes	€455	€85

*\*The prices indicated are for information purposes only and are not binding*

**During the year, NEOMA Business School students benefit from special offers in several student halls.**

The Residence Appart'Hôtel Reims Champ de Mars offers various "to la carte" packages and offers 70 furnished and equipped accommodations as well as genuine para-hotel services. Apartments: studios furnished, studios comfort.



**ACCESS** : 4,1km from NEOMA BS – 31 min by public transportation – 1km from Reims city center



## HOW TO MAKE A RESERVATION ?

Negotiated and priority access conditions by using the NEOMA Business School accommodation platform

<http://housing-platform.neoma-bs.fr/en/school/advert/residence/319>

A problem? Call us on **+33 (0)1 80 92 64 01**

# STUDENT HALLS



## Residence Reims du Parc – REF #1356

Type of accommodation:

Type	Surface area	Furnished	Rent/month	Administrative fees
Studio	18m <sup>2</sup>	Yes	€433	€300

*\*The prices indicated are for information purposes only and are not binding*

**During the year, NEOMA Business School students benefit from special offers in several student halls.**

A residence in the heart of a student area and close to the main educational establishments: - a few minutes from the town center and the SNCF railway station, in a quiet area with many shops.

**ACCESS** : 4,8km from NEOMA BS – 28 min by public transportation – 3km from Reims city center



## HOW TO MAKE A RESERVATION ?

Negotiated and priority access conditions by using the NEOMA Business School accommodation platform

<http://housing-platform.neoma-bs.fr/en/school/advert/residence/1356>

A problem? Call us on **+33 (0)1 80 92 64 01**



LANDLORDS



# LANDLORDS

Numerous landlords publish their adverts on the NEOMA Business school accommodation platform. On the platform, you can find rentals, shared rentals and homestays

## HOW TO VIEW THE OFFERS

Visit the NEOMA Business School housing platform

<http://housing-platform.neoma-bs.fr/en>

or contact us directly

by calling **+33 (0)01 80 92 64 01**



# OUR ESTATE AGENCY PARTNERS



Sefic Immobilier

**Find the agency's offers on:**

<http://housing-platform.neoma-bs.fr/en/profile/agency/283>



**Find the agency's offers on:**

<http://housing-platform.neoma-bs.fr/en/profile/agency/169>

agence  
reims  
cathedrale

**Find the agency's offers on:**

<http://housing-platform.neoma-bs.fr/en/profile/agency/291>



**Find the agency's offers on:**

<http://housing-platform.neoma-bs.fr/en/profile/agency/323>

# THE CROUS ACCOMMODATION SERVICE

## THE REIMS CROUS

14 b Allée des Landais, 51100 Reims

Tel. 03.26.50.59.00

Website: <http://www.crous-reims.fr/>

Grant students have priority when it comes to booking accommodation in student halls. However, depending on availability, all students can benefit from this type of accommodation.



**Please note:** for accommodation in HLMs (French low-income housing) (e.g. Résidence des Facultés), electricity is provided and consumed on an individual basis. It is necessary to take out a contract with an electricity provider and pay said provider for consumption. Moreover, students housed in HLMs are eligible to pay the *taxe d'habitation* (housing tax).



**Housing benefits:** You can obtain housing benefits from the CAF (French family allowance office) by applying on their website: [www.caf.fr](http://www.caf.fr). If you are eligible, the housing benefits will be paid directly to your student hall. You will therefore only pay the difference. Make inquiries as soon as you arrive.



# ACCOMMODATION CONTACT

Opening hours: 8.30 a.m. - 7.30 p.m.  
6 days a week (Monday to Saturday)

 **Tel: +33 (0)1 80 92 64 01**

 **[booking@studapart.com](mailto:booking@studapart.com)**