



LUDWIG-
MAXIMILIANS-
UNIVERSITÄT
MÜNCHEN

INTERNATIONALE ANGELEGENHEITEN
INTERNATIONAL OFFICE



Student Exchange at LMU Munich

Key Data for LMUexchange Incoming Students (partners worldwide)

This is an interactive fact sheet!
The underlined words are
connected to a link!

Institution Details

Name of Institution	Ludwig-Maximilians-Universität München (LMU)
Visiting Address	International Office Ludwigstrasse 27 80539 München Germany
Website	www.lmu.de/international/incoming



Contacts

Admission and Enquiries	Ms Tithmalis Fahrmeir-Min ☎ +49 89 2180 - 3213 ✉ Imuexchange-incoming@lmu.de
Scholarships Erasmus+ with partner countries	Ms Lydia Mair ☎ +49 89 2180 - 2026 ✉ lydia.mair@lmu.de
Student Housing	Ms Christine Kern ☎ +49 89 2180 - 3943 ✉ housing-incoming@lmu.de



Nomination, Application and Registration Procedures

Nomination by home university

You should be nominated by your home coordinator through our [online tool](#) until April 15th (for winter) / October 15th (for summer).

Application

You will find the [application form](#) online. Please submit the online application together with all supporting documents by May 15th (for winter) / November 15th (for summer).

Registration

Registration of new incoming LMUexchange students takes place in September/October and March/April. You will be informed about registration dates in the official letter of acceptance (*Zulassungsbescheid*), which you will receive on approval of your Learning Agreement.



Housing

The "Studentenwerk" is responsible for providing housing for LMUexchange students. The allocation of rooms is, however, coordinated at the International Office.

If you wish to apply for student housing, then tick the appropriate box in the online application form for admission. **Late applicants cannot be considered for student housing.**

Please note, that **rooms can only be guaranteed for approx. half of the students!**

Due to a challenging housing market in Munich, please start looking for accommodation as soon as possible, while simultaneously submitting your housing application.





LUDWIG-
MAXIMILIANS-
UNIVERSITÄT
MÜNCHEN

INTERNATIONALE ANGELEGENHEITEN
INTERNATIONAL OFFICE



Academic Calendar

Academic Year	Semester	Start Date	Lecture Start Date	Lecture End Date	End Date
2022/23	Winter	01 Oct 2022	17 Oct 2022	10 Febr 2023	31 March 2023
	Summer	01 April 2023	17 April 2023	21 July 2023	30 Sept 2023
2023/24	Winter	01 Oct 2023	16 Oct 2023	09 Febr 2024	31 March 2024
	Summer	01 April 2024	15 April 2024	19 July 2024	30 Sept 2024

Note: March, August, and September are officially lecture free. However, you may have examinations to take, or papers to write during these months. Please ask your academic supervisor about the examination schedule.

Timeline

	Nomination	Application	Application Review by IO	Approval by Faculty	Letter of Acceptance	Orientation & Registration	Start lectures	End lectures
Winter Semester	April	May	June	July	June/July	September	October	February
Summer Semester	October	November	December	January	January	March	April	July

Course Information

Consult the online course catalogue on [LSE](#) (no login required, simply click on the link "Vorlesungsverzeichnis" to access the online course catalogue.)

The up-to-date course catalogue is available only two months before the beginning of each semester. To get an idea of courses offered, you can consult the previous catalogues and faculty websites, where there is often general information about choosing courses.

As an exchange student you must choose **at least 60%** of your course modules in your major or minor only. You should take **the other 40%** of your course modules in **no more than two further subject areas** (example: 60% of courses in German Philology, 20% of courses in History and 20% of courses in Political Science).

If you have no previous knowledge and study experience in a subject area, you will solely be permitted to take introductory courses in this field. As a rule, bachelor students will not be permitted to take master courses (any exceptions to this rule will be decided by LMU).

Recognition of Courses

Grading System

At LMU credit for Bachelor and Master Courses is given in accordance with the European Credit Transfer System (ECTS). All coursework will be graded in accordance with the German grading system ("1"–"6", with "1" being the best and "6" the worst grade). A course that is graded between 1 and 4 is passed. Some course are not graded (non-graded lectures).

Transcript of Records

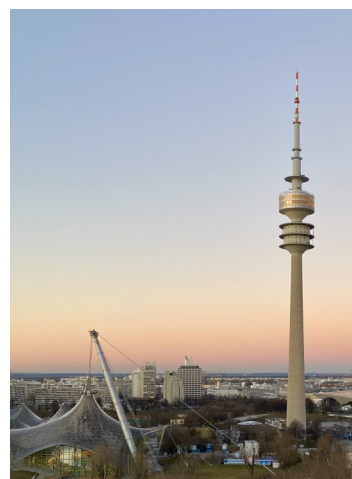
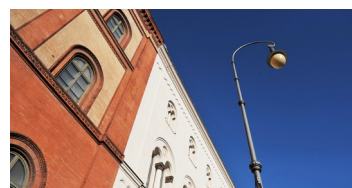
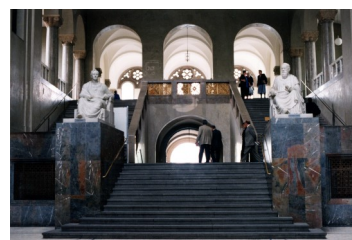
At the end of your study period at LMU, you will receive a Transcript of Records listing all the courses you attended including grades and ECTS credit points. The transcript will not be sent automatically! You can find further information on our website.

Language Requirements at LMU

In order to make the most of your experience in Munich and at LMU, it is important to have good German language skills. Although some departments offer modules taught in English, the language of instruction at LMU is generally German, particularly at bachelor level.

At the time of commencing your studies at LMU, we strongly recommend you have at least CEFR **level B2** in German (for application at least B1). The same proficiency level applies if you plan to take courses in English. Some departments have higher requirements (e.g. English/North American Studies).

If you choose to take only courses taught in English, generally no German language skills are required. There are, however, exceptions to this rule.





LUDWIG-
MAXIMILIANS-
UNIVERSITÄT
MÜNCHEN

INTERNATIONALE ANGELEGENHEITEN
INTERNATIONAL OFFICE



Language Preparation and Orientation

German Language Courses

You can prepare for your study experience at LMU by participating in an intensive language course (also possible online). Courses take place in March and September respectively. They are neither mandatory, nor free of charge, but on successful completion of the course, ECTS-points will be awarded.

Cultural Program

An extensive cultural program with field trips and excursions also takes place in September or March.



General Information

Visa

Depending on your country of origin, there are different entry and residence regulations. If you require a visa, you are strongly recommended to submit your online application form and supporting documents **before** the application deadlines for admission to the university.

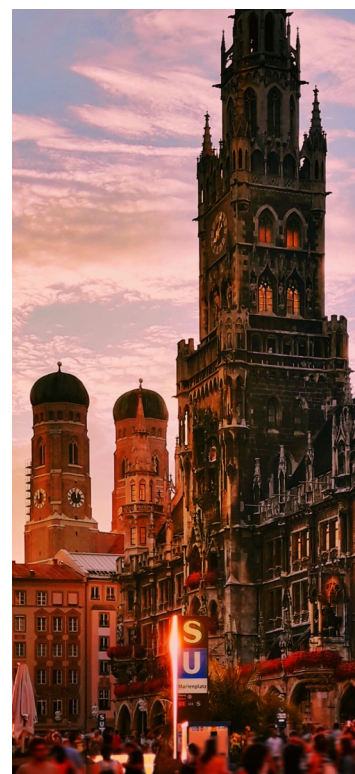
Insurance

Adequate health insurance is mandatory for all exchange students. We strongly recommend that you arrive with adequate travel insurance to cover you until you are officially registered as a student at LMU. You should then take out German health insurance cover for the duration of your stay at LMU. Be aware that insurance packages for study abroad in your home country may not fulfil the German requirements, and will therefore not be accepted. Please note that travel insurance for the duration of your stay **is not enough** and will not be accepted at registration. If you take out private health insurance, you cannot change to public health insurance during your studies!

Accident, personal and third party liability insurance for the duration of your stay in Germany is strongly recommended.

Finances

According to a [consumer goods database](#), the cost of living in Germany for a single person is 867 €/month. Munich is a bit more expensive than most German cities, so you should calculate with about 900 €/month (when living in a student dorm). You can find further information on our [website](#).



Students with Special Needs / Students with Children

If you have special needs, please let us know through your application form.

Services offered from LMU

✉ behindertenberatung@lmu.de

Handbook for Exchange Students

Detailed information about all points mentioned above and other useful information can be found in the [Handbook for Exchange Students](#).

