

esade

FACT SHEET 2022 / 2023



ESADE Business School
Avda. de la Torreblanca nº59
08172 Sant Cugat – Barcelona, Spain



Tel: +34 93.554.35.11
Fax: +3493.204.81.05



<http://www.esade.edu>



bbaprogrammemgmt@esade.edu

Esade holds the selected “Triple Crown” accreditation: EQUIS, AACSB and the ASSOCIATION OF MBA’s. Esade is a member of the CEMS Alliance (CEMS) and the Partnership in International Management (PIM).

In addition, Esade is a Cervantes Institute – accredited institution.

Do Good. Do Better.

APPLICATION

ADMISSION REQUIREMENTS

Students must be nominated by the partner schools.

Students should have completed at least one year of studies at the undergraduate level

NOMINATION PROCESS

To be completed by the home university Exchange coordinators. Deadlines:

Fall term April 30th

Spring term September 30th

APPLICATION PROCESS

Documents must be provided by the student. Deadlines:

Fall term June 30th

Spring term October 15th

COURSE REGISTRATION

To be completed online
by Exchange students

Fall Term:

July 7th – July 12th

Spring Term:

Nov 9th – Nov 14th

- ✓ Copy of Passport (or ID Card only for EU citizens)
- ✓ Proof of Health Insurance (indicating clearly the coverage for the full exchange period)
- ✓ Resume/ Curriculum Vitae
- ✓ Official Transcript from Home University

Do Good. Do Better.

ACADEMIC CALENDAR

FALL TERM 2022

(August 29th to December 9th)

August 30th – September 2nd

August 29th – September 2nd

August 29th – September 2nd

September 5th

December 9th

December 24th - January 8th

Add & Drop Period

Orientation Program (Mandatory)

Spanish Intensive Course (optional)

Beginning of Fall Term 2022

Official End of Fall Term 2022

Christmas Break

SPRING TERM 2023

(January 9th to May 5th)

November 22nd – November 24th

January 9th – January 20th

January 9th – January 20th

January 9th

April 1st – April 10th

May 5th

Add & Drop Period

Orientation Program (Mandatory)

Spanish Intensive Course (optional)

Beginning of Spring Term 2023

Easter Break

Official End of Spring Term 2023

Do Good. Do Better.

LEARNING EXPECTATIONS

COURSE OFFER AND EXAMS

The Exchange Programme course offer will be available on the esade intranet. Please refer to the syllabus of each subject, where the final assessment is clearly indicated.

REGISTRATION TO COURSES

Courses can only be added/dropped during the official registration or **add/drop periods**. No changes will be admitted once those periods are over. Students are kindly invited to check in advance with their home universities which courses can be mapped or not. Esade requires students to be flexible when choosing courses since slots in specific courses cannot be guaranteed to any student.

LANGUAGE OF INSTRUCTION

Courses are taught in **English** and in **Spanish**.

Students interested in taking courses taught in Spanish are highly recommended to have a B1 level in Spanish language, according to the Common European Framework for Reference of languages (CEFR). We reserve the right to ask the official certificates as a proof of Spanish knowledge.

Do Good. Do Better.

LEARNING EXPECTATIONS

SPANISH INTENSIVE COURSES

Esade offers a Spanish intensive Language course for all Exchange students who want to learn or improve their Spanish. The Spanish Intensive Course takes place during the Orientation Program and grants 2 ECTS. Note that students must enroll during the registration process.

GRADING

0,0 - 4,9	Failed
5,0 - 6,9	Passed
7,0 - 8,9	Distinction
9,0 - 10	Outstanding

Non numeric grades
NP is Non-attended

COURSE WORKLOAD

Students from European
universities

Min 27 ECTS – Max 33 ECTS

Students from Non-European
universities

Min 23 ECTS – Max 33 ECTS

**1 ECTS = 25
working hours**

However, if the student is allowed to take a lower amount of ECTS, we would need to receive a written approval of the Home University Exchange coordinator.

Do Good. Do Better.

FACT SHEET 2022/2023

ENTRY VISA AND RESIDENCE PERMIT

EU citizens only need a Passport or national ID in order to enter Spain. Non-EU citizen Will need a Student Visa. When you apply for a Student Visa (*Visado de Estudiantes*) you Will be asked for the following documents:

- Passport (valid for at least 1 years from date of application)
- 2 Passport-size photos
- Proof of financial means
- Proof of medical/accident insurance to cover length of stay
- Letter of Acceptance from esade (includes an invitation to housing, which is accepted as proof of accommodation)
- Other documentation, like proof of residence in Consulate's jurisdiction, a medical certificate, or a certificate of absence of a police record may also be required

The Spanish Embassy or Consulate in your home country Will decide whether to issue a 90-day visa or a 180-day visa. For longer stays, you must apply for a 90-day visa and then apply for a **Student Residence Card** within the first 30 days of your arrival.

Please check the **International Student Handbook** and with the nearest Spanish Embassy or Consulate in your home country for more detailed information.

Do Good. Do Better.

EXTRA INFORMATION



HEALTH INSURANCE

Exchange participants must arrive with their own health insurance that covers all international incidents. More information about health insurance can be found in the International Student Book, which is available on the intranet.



COST OF LIVING

Approximate cost of living while coursing at esade:

Tuition Fees

Waived

Accommodation

500-700€/month

Off campus

Accommodation

800€/month

On campus

Transportation

40€/month

Meals&Groceries

200-300€/month

Miscellaneous

200€/month

Do Good. Do Better.

EXCHANGE PROGRAMME TEAM

Prof. Gerard Costa

Associate Dean, BBA Programme
gerard.costa@esade.edu



Mr. Simone Vincis

Director, BBA Programme
simone.vincis@esade.edu

Ms. Jenny Hindson Badia

Associate Director, BBA Programme
jenny.badia@esade.edu



Ms. Antònia Maria Serra

Director, International
Academic Relations
antoniam.serra@esade.edu

Ms. Caroline Beckershaus

International Student Advisor
isa@esade.edu

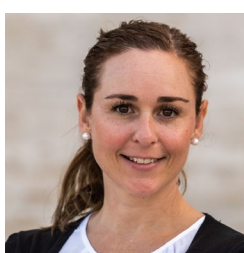


Ms. Cristina Gómez

Exchange Operations Specialist
cristina.gomez5@esade.edu

Ms. Carolina Álvarez

Exchange Coordinator – USA
carolinaandrea.alvarez@esade.edu

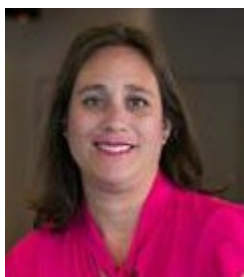


Ms. Jimena Mesto

Exchange Coordinator – USA
jimena.mesto@esade.edu
- On Maternity Leave -

Ms. Sara Prendes

Exchange Coordinator – Asia
sara.prendes@esade.edu



Ms. Laia Nieva

Exchange Coordinator –
Europe (outgoings)
laiaeugenia.nieva@esade.edu

Mr. Francesc Blanco

Exchange Coordinator –
Canada, Europe (incomings),
LATAM & Oceania
francesc.blanco@esade.edu



Ms. Laura Noëlle

Project Manager
laura.noelle@esade.edu

Ms. Carlota Rubio

Officer
carlota.rubio@esade.edu

